



Dredging and Dewatering Services

TECHNOLOGY AND EXPERIENCE WORKING TOGETHER

Technology and Experience Working Together

Eagle Services Include:

- Dredging Services
- Specialty Pumping Services
- Dewatering Services
- Waste Recycling Processes
- Contract Operational Services
- Remediation Services
- Waste Recycling & Disposal

Company Background

Eagle North America provides a comprehensive range of services for the management of residuals. Eagle was founded in 1993 as a waste recycling and waste disposal company.

Eagle is headquartered in Augusta, Georgia, where Eagle maintains its principle shop, equipment yard, and equipment maintenance and fabrication facility.

In 1993, Eagle entered into the dredging and dewatering services market. Through innovation and a commitment to quality, Eagle now enjoys a leadership position in this specialized field.

In 2000, Eagle purchased Western Dredge, the nations

oldest and most respected residuals dredging contractor. Western Dredge headquartered in Boise, Idaho, has been dredging residual materials for over 28 years.

Eagle maintains offices in Augusta, GA, Charleston, SC, Boise, ID, and Edmonton, Alberta. The Charleston location is the site of Eagle's full-service waste processing and recycling facility.

Eagle owns and operates a fleet of specialized equipment. All of Eagle's equipment is mobile and modular.

Eagle's equipment is designed to be able to meet the unique requirements of each project. Single or multiple machine set-ups give



Eagle North America's World Headquarters located in Augusta, Georgia

Eagle the ability to meet our clients many varied needs.

Eagle's biggest success to date has been the recruitment of experienced and talented dredging and dewatering professionals. Eagle takes pride in the professionalism of our personnel.

Contents:

Health & Safety Policy	2
Quality Assurance Policy	2
Employee Training & Certification	3
Insurance, Bonding, & Licenses	3
Eagle Locations & Facilities	4
Eagle Capabilities & Experience	5
Eagle Equipment Resources	14
Eagle Project Profiles	15
Other Eagle Experience	16

Environmental Policy

Eagle North America is dedicated to providing technically advanced and cost-effective solutions to our clients' operational and environmental challenges related to their sludge by-products and/or sludge waste streams.

At Eagle, we live under a 14-point Corporate Environmental Policy, which states in part that the prevention of pollution and enhancement of the environment are fundamental premises of our company's business. We believe that all corpora-

tions have a responsibility to conduct their business as stewards of the environment, and seek profits through activities that leave the earth healthy and safe.

Health and Safety Policy



All aspects of Eagle projects are analyzed using a job safety analysis before work begins.

“Eagle is dedicated to providing our employees with a safe work environment”

Eagle operates under a strict Health and Safety Program designed to keep safe work practices the number one priority. We routinely conduct operations at project sites where employees perform physically demanding and hazardous work in a wide variety of industrial environments. Eagle is dedicated to protecting our people, our customers’ employees and property, and the environment. The Eagle Health and Environmental Safety Program is based on a proactive, continuous improvement process of prevention, assessment, corrective action, and training.

Eagle operates in strict compliance with all OSHA stan-

dards, with special emphasis on Hazardous Waste Operations and Emergency Response (29CFR 1910.120). The primary objective of our safety program is to prevent accidents and injuries and protect personnel from exposure to hazardous situations and environments. Through careful planning, hazard recognition, engineering controls, employee safety indoctrination and training, and rigorous attention to safety details, we ensure the health and safety of our operations.

Eagle health and environmental safety staff is comprised of multi-disciplined professionals, educated and trained in all aspects of hazardous material handling,

remediation, and control. Eagle places the responsibility for health and safety on all Management, the field Project Manager, the field Superintendent and every company employee trained and certified to be assigned to a field project. The Project Manager has access to unlimited resources in order to ensure that all health and safety concerns are addressed. All of our field personnel (e.g., equipment operators and laborers) are trained and qualified in all aspects of his or her job, as well as the site specific Health and Environmental Safety Plan.

Quality Assurance Policy

Eagle is committed to providing a comprehensive Quality Assurance Program designed to ensure each project meets or exceeds the performance objectives of the customer and the governing safety/environmental regulations.

Eagle operates in strict compliance with a Corporate QA program that is implemented using detailed operations procedures. The performance objectives and operational standards for each project are integrated into site-specific operational

procedures. These procedures are submitted for review as required or desired by each customer to ensure each project’s quality objectives are clearly defined and understood by all involved parties. Eagle prepares and presents

a Daily Worksheet for signature by an authorized customer representative to formally ensure that we are meeting the project’s performance objectives and communicating our daily progress.

Eagle North America Mission Statement



Eagle provides sediment removal at a private marina.

The mission of the Eagle North America is to provide comprehensive sludge management services for industrial and municipal clients in a Total Quality manner. We will set the standard of excellence in the sludge dredging and dewatering industry.

We will continuously strive to exceed the expectations of our customers, our people, our shareholders, and government regulators, while constantly improving our environment.

We will remain innovative and aggressively utilize new technology to achieve our customers’ goals and objectives.

We will remain focused on our business and be totally committed to work smarter and harder than our competition.

We will remain focused on providing the highest quality service at the most economical pricing available in the industry.

Employee Training and Certification

Eagle operates in strict compliance with our Corporate Health and Environmental Safety Program, which meets, and often exceeds, all applicable federal, state, and local regulations (e.g., OSHA, MSHA, EPA, DOT, etc.). A critical part to our compliance with this program and our operational success as a total environmental services contractor is the training and certification of each employee.

Eagle employees are trained and certified in the following areas prior to beginning work at a customer's job site. Documentation of each employee's training, certifications, and medical screening results can be provided to our customers for review prior to arrival on-site.

- New Employee Orientation and Training
- Health and Environmental Safety Program Training
- Site Specific Health and Environmental Safety Plan Training
- Equipment Operator Training & Qualifications
- Initial Drug Screening and Random Drug Screening
- 40 Hour OSHA (Hazardous Material) and Annual Refresher Training
- Hour MSHA New Miner and Annual Refresher Training
- OSHA Site Supervisor Training (as applicable)
- Site Safety Officer Training/Certification (as applicable)
- First Aid/CPR Training
- Respirator Training and Fit Tests
- Confined Space Entry Training and Certification



Continual training increases professionalism and improves safety.

Insurance, Bonding Capacity, & Licenses

Eagle has excellent insurance coverage with a standard \$5,000,000 general liability policy. Eagle reviews each project and has the ability to provide additional insurance coverage as warranted.

Eagle has excellent bonding capacity. Eagle will provide required bonding after a thorough and exhaustive review of project specifications and contract terms.

Eagle has the required licenses in the majority of the Southeastern states. Eagle reviews the requirements to conduct work in each state prior to each project and works to obtain the necessary licenses and permits.

Eagle is working on a comprehensive licensing effort to obtain and maintain the required licenses to conduct dredging and dewatering activities in all 50 states.

Eagle has experience working outside of the mainland of the United States.

Eagle has completed projects in Hawaii, Alaska, and Canada. All of these projects are in remote locations and required extensive planning and management oversight for the successful execution.

Eagle has all of the required permits and documentation to work in Canada.



Installation of Eagle's High Pressure Membrane Filter Press at INCO located in Thompson, Manitoba.



Eagle's recently completed World Headquarters in Augusta, Georgia.



Eagle has extensive experience working outside of the mainland of the US, the above project was recently completed in Hawaii.



Eagle recently completed a dredging project in Alaska for Kennecott that was in a remote location only accessible by boat or float plane.

Eagle Locations and Facilities

Eagle has offices and facilities in the following locations:

Eagle North America (706) 860-7737
 Corporate Headquarters (706) 210-8982 fax
 5105 Pierce Court
 Evans, Georgia 30809

Eagle Fabrication & Maintenance Facility (706) 860-7737
 5105 Pierce Court
 Evans, Georgia 30809

Eagle North America (803) 644-6697
 1940 South Boundary Ave, SE (803) 648-5791 fax
 Aiken, SC 29801

Eagle North America (864) 224-0940
 110 Dandelion Trail (877) 407-6098 fax
 Anderson, SC 29621

Eagle North America (803) 329-4650
 Bowater Dewatering Facility (803) 329-4640 fax
 5300 Cureton Ferry Road
 Catawba, SC 29704-0007

Eagle North America (843) 636-9400
 Dorchester Recycling Facility (843) 636-9100 fax
 2425 Highway 78
 Dorchester, South Carolina 29437

Eagle North America (204) 778-2355
 Thompson Field Office (204) 778-2182 fax
 INCO LIMITED
 Thompson, Manitoba R8N 1P3

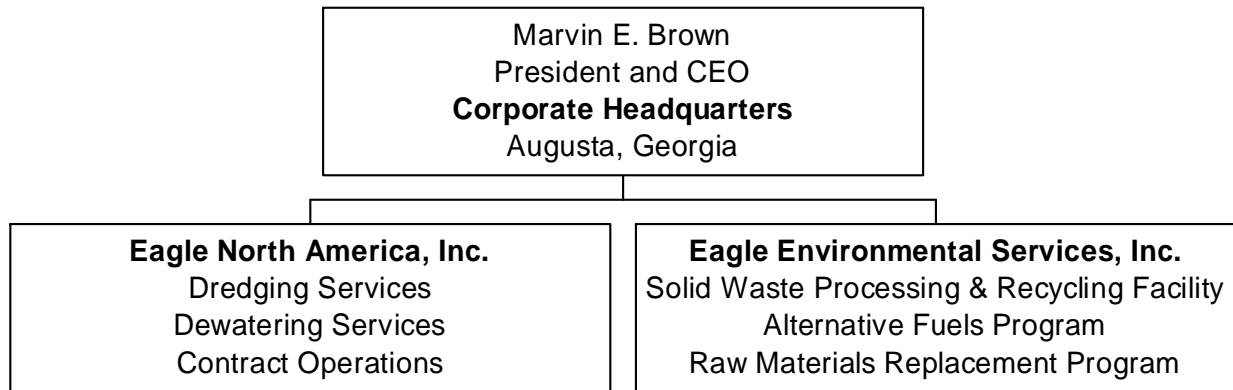
Eagle North America (208) 343-5858
 Western Division Office (208) 343-7477 fax
 P.O Box 2862
 Boise, Idaho 83701

Eagle North America of Canada (780) 991-9260
 6750-75th Street, 2nd Floor (780) 468-2430 fax
 Edmonton, Alberta T6E 6T9

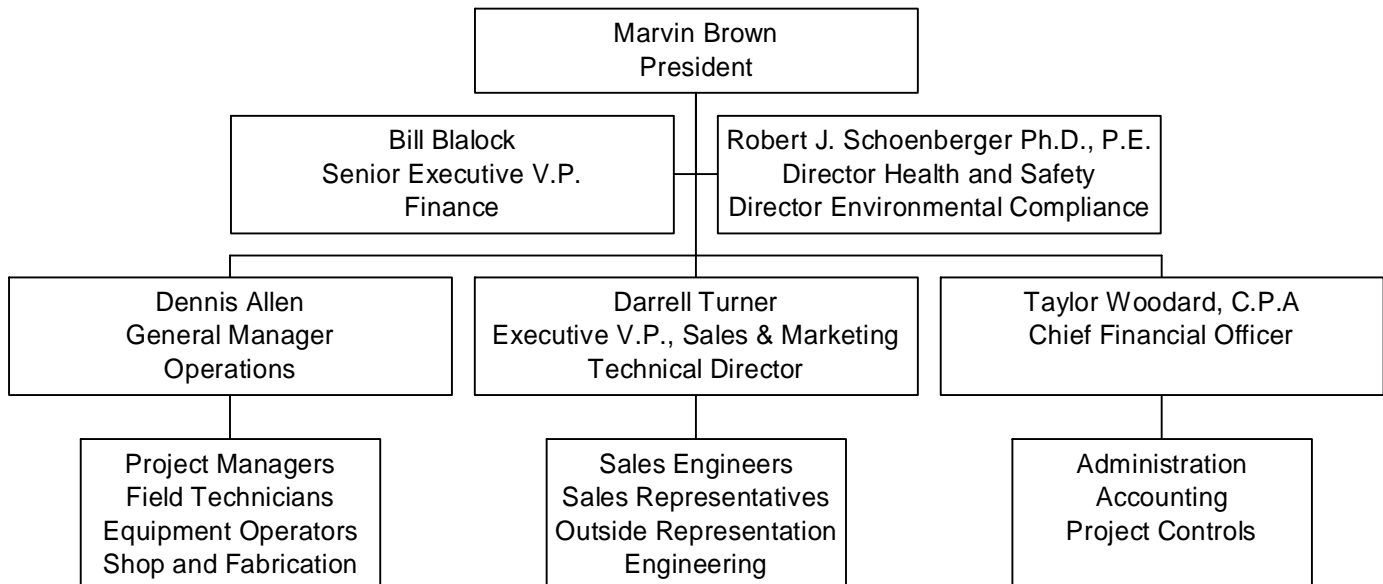


Eagle Organizational Structure

EAGLE NORTH AMERICA



EAGLE NORTH AMERICA, INC.





Eagle working on dredging project in exclusive residential community.



Eagle has the capability to pump difficult materials in remote locations.



Eagle's high-pressure belt press dewatering skids produce the driest cake in the industry at the lowest cost.

Eagle Capabilities & Experience

- **Dredging Services**

Dredging Equipment:

- Portable Dredges
- Cutter Suction Dredges
- Horizontal Auger Dredges
- Stainless Steel Dredges
- Remote Controlled Dredges
- GPS Guidance Systems

Dredging Services:

- Silt and Sludge Removal
- Cleaning Industrial Ponds & Lagoons
- Sediment removal from lakes, rivers, canals
- Sediment removal from docks and marinas
- Process Control dredging applications

- **Dewatering Services**

Dewatering Equipment:

- High Pressure Belt Press Technology
- Centrifuge Technology
- Plate and Frame Filter Press Technology
- Geotube Technology
- Screw Press Technology
- Grinders, Screens, Hydrocyclones, Tanks

Dewatering Services:

- Treatability Studies / Site Evaluations
- Silt and Sediment Dewatering
- Contaminated Material Dewatering
- Biosolids Dewatering Services
- Residuals Dewatering Services
- Thermal Processing

- **Specialty Pumping Services**

- TOYO Pump
- Clarifier and Digester Cleaning
- Track Mounted Pumps
- Titanium Pumps

- **Pipe Fusion Services**

- **Contract Operations**

- Design, Engineering, Finance, Operations

- **Waste Disposal & Recycling**

Dredging Services

Eagle maintains an extensive inventory of dredging equipment with sizes ranging from 6" auger style dredges to 10" high production cutter head models.

Eagle typically utilizes a horizontal auger style dredge to remove sludge from ponds, lagoons, lakes, rivers, and canals.

These dredges feature a six, eight, or ten inch sludge pump. The pumping barge

is typically eight foot wide by 30 foot long.

The barge is winched forward or backward using a hydraulic winch. Lateral movement is accomplished by adjustments in a shore mounted cabling system.

These dredges feature a hydraulic cutter head to remove impacted sludge.



Eagle owns an extensive fleet of portable dredging equipment ranging from 4" remote controlled dredges to larger 10" cutter suction style dredges.



Adak is an 8" cutter suction dredge specially designed to operate in narrow canals and rivers.

Process Control

Eagle has developed methods and techniques to dredge exact concentrations of residual materials to process applications. The large percentage of our applications involve the dredging of residual materials to process plants. Our ability to provide consistent concentrations of material from our dredging equipment is the key to our

success. To accomplish this goal, Eagle focuses on operator training and provides our operators with the most advanced instrumentation available. Our dredges are equipped with the latest GPS equipment for exact positioning, and advance flow meters and density meters.

Dredging Services Provided

Eagle provides the following dredging related services:

- Silt and Sludge Removal from Industrial Ponds & Lagoons
- Biological Sludge Removal from Treatment Lagoons
- Sediment Removal from Lakes, Rivers, and Canals
- Clearing of Waterways & Docks
- Low pH or Corrosive Residuals
- Dredging to Process Applications
- Dredging and Dewatering Applications
- Specialty Dredging Services



Eagle has extensive experience in dredging to a process. This operation involved dredging a consistent flow of material to a dewatering process 24 hours per day, 7 days per week for approximately 14 months.



Eagle's 75 Hp TOYO Pump operating with high-pressure jet-ring. The TOYO Pump is the most aggressive solids pumping pump set available in the world. It is capable of pumping 5 ½" rocks and debris, with a solids content in excess of 35% solids

Specialty Pumping Services

Eagle maintains an extensive inventory of specialty pumping equipment. Eagle has completed many challenging pumping projects.

Eagle is currently dredging the most corrosive industrial sludge ever produced at a refinery in Canada. Eagle met the challenge of pumping a material so corrosive it will dissolve 316 Stainless Steel by forming an alliance

with the nation's largest dredge manufacturer and our client. After determining material compatibility, a custom dredge was manufactured using special alloys and coatings. The dredge also is remotely operated, due to the hazardous nature of the material being dredged.

Specialty Pumping Applications

Eagle provides the following specialty pumping services:

- TOYO Pumps
- Clarifier and Digester Cleanout
- Track Hoe Mounted Pumps
- Dri-Dredge Capabilities
- Dri-Prime Diesel and Electric Pump-sets (6" – 12")
- Submersible Vortex Pumps
- Titanium Pumps
- Floating Booster Pump Stations



Eagle maintains a fleet of specialty pumps, including hydraulic submersible pumps and diesel power packs.



Eagle utilized track mounted fusion machines to increase productivity and allow for safer pipe installation. Eagle has pipe fusion capability from 4" to 20".

Pipe Fusion Services

Eagle has gained substantial experience in fusing and installing HDPE (High Density Polyethylene) piping. Eagle uses heat fused HDPE piping on all of our projects. Heat fusion techniques ensure a strong leak proof pipeline. Installation is quick and efficient.

Eagle has the capability to butt fuse 4" to 20" OD piping.

Dewatering Services

Eagle was founded with a principle focus on providing the highest quality dewatering services in the industry.

Our dewatering services are designed to separate solids from liquids, return clean water, while providing the highest volume reduction achievable.

The majority of Eagle's dewatering services are performed using belt press technology.

Eagle's Belt Press Dewatering Skids have been designed and manufactured to

meet the challenges of the mobile, temporary dewatering business.

Eagle skids feature new equipment rather than re-conditioned used equipment. This allows for much higher on-line efficiencies, lower operational costs, drier cake, and cleaner filtrate.

Eagle customizes each project to include a variety of other processes including, screening, thickening, sand removal and/or washing, and drying and thermal treatment technologies.



In some applications it may be necessary to separate larger grained materials from finer grained materials. Eagle utilizes a combination of hydro cyclones, high frequency screens, and settling tanks.

Eagle Dewatering Technologies

Eagle has experience and expertise in the five main dewatering technologies:

- Belt Press
- Centrifuge
- Recessed Chamber Plate and Frame
- Screw Press
- Geotubes



Eagle owns and operates the largest fleet of skid mounted high-end new belt filter presses. Each skid features the latest technology available.

Treatability Studies / Project Evaluations

Eagle will perform a preliminary site investigation and perform a bench scale treatability study. This will allow our engineers to define expected performance parameters.

The following information will be collected and analyzed in preparation of our approach:

PHYSICAL PROPERTIES

- Particle Size Distribution
- Dry Bulk Density
- Moisture Content
- % Weight of Organic Matter (TOC)
- Debris and Oversize Fractions

CHEMICAL PROPERTIES

- pH
- Total Organic Carbon
- Soil Mineralogy
- Hazardous Contaminants (if required)

REGULATORY REQUIREMENTS

- Federal, State, and Local Permit Requirements
- Applicable site remediation statutes i .e., CERCLA, RCRA, etc.



In some applications it may be necessary to separate larger grained materials from finer grained materials. Eagle utilizes a combination of hydro cyclones, high frequency screens, and settling tanks.

Eagle Belt Press Technology

Belt presses are designed to remove water from sludge or slurry by mechanical means. It uses the force due to gravity and the forces generated from filter fabrics, or belts, and being wrapped around rollers to squeeze the water from the slurry. The suspended solids remain on the belt; the water is drained away.

The process normally begins with the injection of polymer into the slurry to cause “flocculation,” that is the gathering of suspended solids particles into larger masses. These larger

masses, “floc”, remain on the surface of the belt, while the water drains away. High pressures are generated by wrapping the belts, with the slurry sandwiched between them, around a series of rollers, squeezing out the water and creating a dry cake.

The belts are continuously cleaned via a water shower spray.

The process is continuous, slow moving, and requires a minimal amount of maintenance.

Multiple Press—High Production Applications

Eagle’s dewatering equipment is designed with the ability to be set-up in a variety of configurations depending on the amount of dewatering capacity required and the size of the staging area available.

Multiple press set-ups allow for dewatering capacity to meet any schedule requirement.



Multiple press location featuring six 2.0 Meter Belt Press Dewatering Skids and auxiliary equipment.



Eagle owns and operates the largest fleet of skid mounted high-end new belt filter presses. Each skid features the latest technology available. Eagle features high-pressure technology.

“Eagle has developed a reputation for helping our customers find the best, most cost-efficient solution to their particular liquid/solids separation problems”

Geotube Dewatering Technology

Eagle utilizes high strength permeable geotextile tubes that can be filled with fine grained residuals that are required to be dewatered and volume reduced. The geotextiles unique weave and fabrication creates small pores that confine the fine grain materials. The excess water drains from the geotextile tubes resulting in effective dewatering and efficient volume reduction.

This technology is very effective when plenty of space is available and sufficient time is available to allow the geotubes to dry effectively. Once the material has been

effectively dewatered, the tubes can be refilled to allow the tubes to reach their maximum capacity or the material can be hauled away.

In marine applications, the geotubes are filled to create submerged structures, such as breakwaters, groynes, and spoil-containment areas.

Because of their cost effectiveness, simplicity in placement and minimum impact on the environment, geotubes have proven to be a very viable alternative to traditional techniques.



Eagle specializes in more difficult dewatering applications. This project involved the removal of contaminated sediments in Hawaii, the sediments were dewatered using geotubes on a barge. The filtrate was required to be captured and sampled prior to release. The dewatered sediments were off-loaded from the barge for disposal.

Plate and Frame Filter Press Technology

Eagle also owns and operates plate and frame filter press technology. Plate and frame filter press technology is a batch process. The sludge is chemically treated to allow for separation via pressure. Plate and frame technology typically produces drier filter cake than either centrifuge or belt press technology.

However, plate and frame technology is generally the most expensive on a cost basis. It is generally used when disposal costs are higher, since the higher volume reduction results in less volume for disposal, in some cases justifying the higher cost of processing.

Eagle's owns the largest membrane squeeze plate and frame filter press available. Our press operates at 225 psi, resulting in the driest cake possible in the industry.

Centrifuge Dewatering Technology

Eagle also owns and operates centrifuges. Although the majority of Eagle projects are completed using our high-pressure belt press technology due to cost advantages, some projects require centrifuges.

Eagle typically uses centrifuge technology only on materials that are difficult to dewater due to either oil and grease or the nature of the material makes belt release difficult.



Eagle's 12.5 Cubic Yard Membrane Squeeze Plate and Frame Filter Press being set up for operation at a remote location in Canada.

Outsourced Contract Operations

Eagle is working with industrial clients that are looking for ways to outsource strategic, but non-core processes. Outsourcing non-core processes allows them to focus all of their energies on optimizing core business processes.

Eagle has developed a strategic alliance with Andritz-Ruthner, Inc. to provide contracted sludge dewatering services.

Eagle working with Andritz provides our clients access to the vast resources of our companies. Andritz is the

recognized leader in the design and manufacture of dewatering equipment.

Eagle currently has several long-term outsourced dewatering operations. Eagle is committed to only providing our clients with the highest quality equipment and services.

Eagle will not sacrifice quality in return for a lower overall project price. Eagle always finds a way to offer the highest quality equipment at competitive, economical pricing that makes financial sense to our clients.



Eagle designed, constructed, and operates a sludge dewatering facility at a pulp and paper mill in the Southeast. This plant operates continuously 24 hours per day; 365 days per year, and has the capacity to continually dewater five million gallons of sludge daily.

Screw Press Technology

Eagle provides high quality Andritz screw presses to provide low cost, high solids dewatering to pulp and paper mills. These units produce dry cake suitable for burning as a fuel in the plants boilers.



Eagle provides complete design, engineering, construction, and operation of Screw Press dewatering facilities at various pulp and paper mills. Eagle provides this service in conjunction with Andritz, the worlds leading supplier of high-quality high-solids dewatering screw presses.

Eagle Pulp & Paper Clients Include:

- Bowater
- International Paper
- Georgia Pacific
- Jefferson—Smurfit
- Alabama River Pulp
- Weyerhaeuser
- Stone Container Corp
- Willamette
- Potlatch
- Simpson Paper Co.

Eagle Solid Waste Processing and Recycling Facility

Eagle owns and operates a fully permitted Solid Waste Processing Facility in Dorchester, SC. The facility has two concrete pits that are used to solidify non-hazardous wastes that contain free liquids. The wastes will be mixed with a solidification agent then transported either to a sub-title D landfill or to a cement kiln.

The facility is a Greenfield site located on 15 acres. The facility has a 60' x 120' pre-engineered metal processing building. The building

has a concrete floor with a 6" containment wall around the perimeter. Inside the building the two concrete pits measure 12' x 18' x 8' deep each. These pits are lined with 3/8" steel plate. All storage and processing of wastes are conducted inside of this building. The facility is equipped with ventilation including a dust collector and bag house.

Eagle works with the local cement manufacturers to supply them with materials and by products that they

can use in their process. These materials and by-products might otherwise be landfilled, but are recycled by being made into cement.

Eagle also works with the local cement plants as well as waste-to-energy plants to supply non-hazardous wastes to be used as fuel. Eagle is equipped with an industrial shredder that can reduce the size of all types of non-hazardous waste so that it is a suitable fuel for cement plants.

Eagle is the largest supplier of alternate fuels and raw materials for Holcim in the United States. Holcim is the nations second largest producer of portland cement.

Eagle can provide a variety of options to recycle materials that would otherwise be disposed of in a solid waste landfill.



Eagle's fully permitted waste processing and recycling facility located in

Waste Disposal and Recycling Services

Eagle can provide you with complete waste management services along with the assurance of excellent references and qualifications. We specialize in the following waste recycling and disposal services:

- Stabilization and disposal of non-hazardous liquids and sludges
- Shredding of non-hazardous waste to be used as a fuel
- Remediation and Tank Cleaning Services
- Recycling and reuse of non-hazardous wastes by using as a raw material replacement in cement kilns
- Transportation services for all of the above

Eagle Equipment Resources

Dredging Equipment:

- (1) 12" Cutter Suction Dredge—DSC Baracuda
- (1) 8" Cutter Suction Dredge
- (2) 10" Cutter Suction Dredge—Ellicott 370
- (1) 10" Cutter Suction 40 ft Dredge Extension
- (7) 8" Horizontal Auger Dredge—Ellicott 915
- (1) 8" Horizontal Auger Dredge—H&H
- (1) 10" Horizontal Auger Dredge—IMS 4010
- (3) 6" Horizontal Auger Dredge—Ellicott 810
- (1) 4" Horizontal Auger Dredge—Stainless—Remote
- (2) 4" Floating Unmanned Dredge Platforms

Specialty Pumping Equipment

- (1) 8" 75 HP Electric Submersible TOYO Pump
- (1) 10" 150 HP Electric Submersible TOYO Pump
- (1) 12" CD-300 Dri-Prime Diesel Pumpset
- (1) 6" Dri-Prime Diesel Pumpset
- (3) 6" Dri-Prime Electric Pumpsets
- (20) Vogelsang Rotary Lobe Sludge Feed Pumps
- (2) Monyo Sludge Feed Pumps
- (5) 8" & 10" Dredge Booster Pumps
- (2) 6" Vortex Hydraulic Submersible Pumps & Diesel Power Packs

Dewatering Equipment:

- (4) Andritz 2.0 Meter Gravity Belt Thickeners
- (1) Andritz 3.0 Meter Gravity Belt Thickeners
- (4) Andritz 2.0 Meter SMX-S8 w/ High Pressure Nip Rollers
- (4) Andritz 2.0 Meter SMX-S8 High Pressure Skid Presses
- (1) Andritz 3.0 Meter SMX-S14 High Pressure High Solids Press
- (1) Andritz 2.2 Meter LP-7 Cantilever High Pressure Press
- (7) Andritz 2.0 Meter LP-7 High Pressure Presses
- (1) Phoenix 2.0 Meter Skid Mounted Press
- (1) Ashbrook 2.0 Meter KLAM Press
- (1) Andritz 42" Andritz Screw Press
- (2) Trent 12.5 Cubic Yard Membrane Plate and Frame Filter Press
- (4) 225 Cubic Feet Membrane Plate and Frame Filter Presses
- (3) 440 Cubic Feet Membrane Plate and Frame Filter Presses
- (3) 220 Cubic Feet Membrane Plate and Frame Filter Presses

Auxiliary Equipment:

- (3) SWACO Super Screens
- (1) Andritz Waste Master Digester Screening Unit
- (7) Portable 21,000 gallon Mixing Tanks with mixers
- (1) 500,000 gallon portable mixing tank with mixers
- (1) 500,000 gallon Modutank
- (3) GPS Dredge Guidance Systems
- (3) Pipe Fusion Machines
- Valves, Manifolds, Piping

Eagle Equipment Resources

Construction Equipment:

- (2) Cat I-28 Front End Loaders
- (1) Cat D-6 Dozer
- (1) John Deere Dozer
- (1) John Deere Large Excavator
- (2) Long Reach Trackhoes
- (1) Regular Reach Trackhoes
- (2) Tractor & Trailer Rigs

Fine Coal Recovery Plant:

- (1) Power Screen System
- (1) Coal Slurry System
- (1) 900 HP Slurry Pumps
- (2) 300 TPH FINE COAL Recovery Plants



Eagle Project Profiles – References

BP, Cooper River Plant, Wando, SC

Brad Fickett – (843) 881-5202

Current provider of dredging and dewatering services for the removal of residuals from the plants wastewater lagoons. Eagle has met or exceeded every expectation.

Provided remote controlled dredging equipment in a highly corrosive environment. Engineered solution to materials removal project that resulted in an overall safer operation.

Project Value: > \$1,000,000

Bowater, Catawba, South Carolina

Jim Perry – (803) 981-8665

Design, construction, operation and maintenance of a permanent sludge dewatering facility, including placement of in excess of 180,000 cubic yards annually of dewatered residuals. The project is meeting or exceeding all performance criteria.

Project Value: > \$10,000,000

International Paper, Augusta, Georgia

Rick Goley – (706) 796-5691

Current provider of pond related sludge removal services. Have completed several large projects that removed in excess of 500,000 cubic yards of sludge from various wastewater lagoons.

Project Value: > \$5,000,000

Westinghouse Nuclear Fuels, Columbia, SC

Jim McCormac – (803) 776-2610 ext. 3566

Current provider of dredging and dewatering services for the removal of calcium fluoride sludge from the plants wastewater lagoons.

Eagle developed the dewatering process involving high-pressure operation of specialized dewatering equipment. Eagle also provides recycling services for the resulting dried material.

Project Value: > \$10,000,000 (10 Year Contract)

INCO, Thompson, Manitoba

Cathy Stewart – (204) 778-2355

Dredging and dewatering of the most hazardous and corrosive sludge produced. The sludge consists of a low pH copper, nickel, arsenic sludge.

The project consists of development of a chemical treatment process combined with dewatering to allow for complete recycle of the waste.

Project Value: > \$5,000,000 (Multi-year Contract)

Willamette, Kingsport, Tennessee

John Elkins – (423) 392-2833

Dredging and dewatering of over 250,000 cubic yards of sludge from the plant's wastewater lagoon. The project consists of five large 2.0 meter self-contained belt presses. The project was completed on time and on budget without a safety incident or mishap.

Project Value: > \$4,000,000

International Paper

Rich Lowe – (513) 248-6000

Eagle has performed numerous dredging and dewatering projects for various mills owned by International Paper. Many of these projects were in response to emergency situations and required immediate mobilization.

International Paper regards Eagle as a valued contractor and recognizes our commitment to providing them with quality services.

Project Value: > \$7,500,000 (Combined Revenues)

Nevada Power Company

Joe Day – (702) 367-5306 x 204

Dredging of 150,000 cubic yards of fly ash to a disposal site located 6,000 feet from ponds.

Project Value: ~ \$400,000

Other Eagle Project Experience

Government Projects

- Oregon Marine Board
- City of Gilroy, California
- Durham County, North Carolina
- Augusta, Georgia
- Laguna Sanitation District
- City of Port Townsend, Washington
- Elk River, Elkton, Maryland
- City of Ajo, Arizona

Pulp & Paper Projects

- Armstrong World Industries, Mobile, Alabama
- Alabama River Pulp, Purdue Hill, Alabama
- James River Corp, Camas, Washington
- Georgia Pacific, Toledo, Oregon
- Stone Container, Missoula, Montana
- Weyerhaeuser, North Bend, Oregon
- Jefferson Smurfit

Power & Utility Companies

- Nevada Power
- SCE&G
- Arizona Public Service Utilities
- Excel Energy
- Hoosier Power
- Southern California Edison
- Lower Colorado River Authority
- SRP
- Oklahoma Gas & Electric
- San Miguel Electric Cooperative

Mining Industry

- Newmont Gold, Carlin, Nevada
- Kennecott Copper, Utah
- Kennecott Copper, Alaska
- Retec, Billings, Montana
- Barrick Goldmine
- Newmont Lone Tree Mine
- Simplot Silica Products
- J.M. Huber, Wrenns, Georgia

Manufacturing Industry

- Oregon Steel Mill, Portland, Oregon
- Alumax, Mt. Holly, South Carolina
- Reynolds Metals, Longview, Washington
- BP Oil
- Tosco
- Chevron, Hawaii
- Con Agra

Private Clients

- Hilton Head
 - Overlake Golf & Country Club
 - Tahoe Keys Home Owners Association
 - Flat Head Lake
 - Kaneohe, Hawaii
-